

## Public Meeting and Hearing

on  
Georgia-Pacific LLC  
Crossett Paper Operations  
Draft Permit Number AR0001210

Crossett Middle School  
100 Petersburg Road, Crossett, AR  
May 10, 2010, 6:00 pm  
Public Hearing Officer  
Becky Allison, Public Outreach &  
Assistance



## Outline of this Evening's Meeting and Hearing

- Public Meeting
  - Slideshow presentation
  - Questions and dialogue
- Formal Public Hearing
- Adjournment



### ADEQ's Mission

To protect, enhance,  
and restore the natural  
environment for the  
well-being of all  
Arkansans

### ADEQ Water Division's Mission

To protect the  
physical, chemical,  
and biological  
integrity of all  
Arkansas waters



## Purpose of the Public Meeting



It's an opportunity to...

- learn about the  
permitting process and  
the proposed permit
- ask questions and get  
answers
- make ADEQ aware of  
your concerns



## Purpose of the Public Hearing



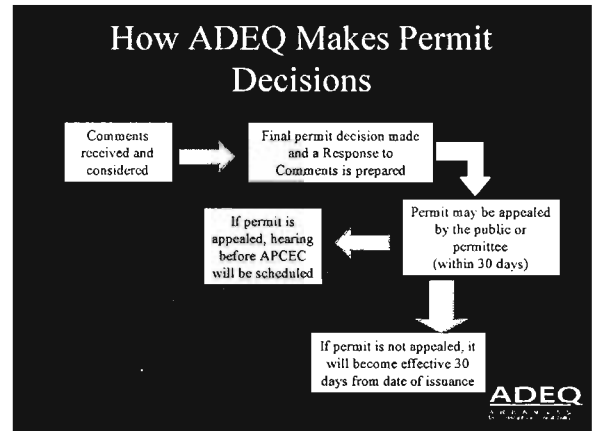
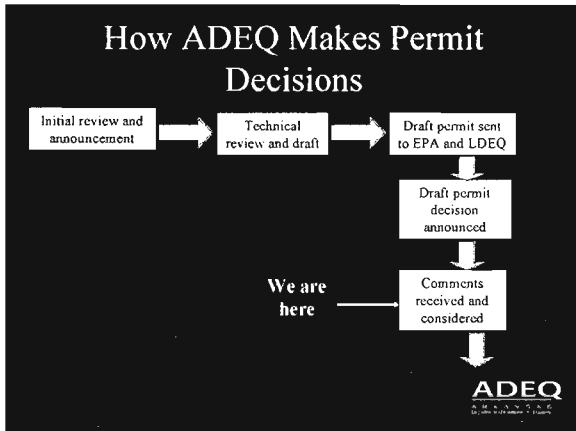
- To provide an  
opportunity for the  
public to give formal  
oral testimony and  
comments on the  
proposed permit



## Protecting Water Quality


Permits are issued in  
accordance with all  
applicable state and federal  
regulations. For this permit,  
Louisiana's water quality  
standards were taken into  
account due to the distance of  
the discharge from the state  
line.






### Georgia-Pacific LLC Crossett Paper Operations

NPDES Permit No. AR0001210




- Facility is located at:  
100 Mill Supply Road  
Crossett, AR 71635
- Facility complex consists of a Kraft Pulp & Paper Mill, Plywood & Stud Mills, and a Chemical Plant




### Facility Complex Description

- Kraft Pulp & Paper Mill
  - Produces fine paper, tissue paper, and paperboard for consumption
- Plywood & Stud Mills
- Chemical Plant
  - Manufactures Phenol, Urea Formaldehyde Resins, and Tall Oil
- Began Operation as a Sawmill in 1902
- Pulp & Paper Mill began operation in 1937




### Effluent Description

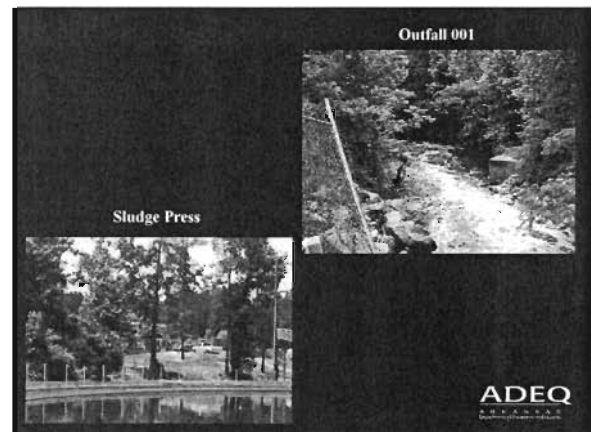
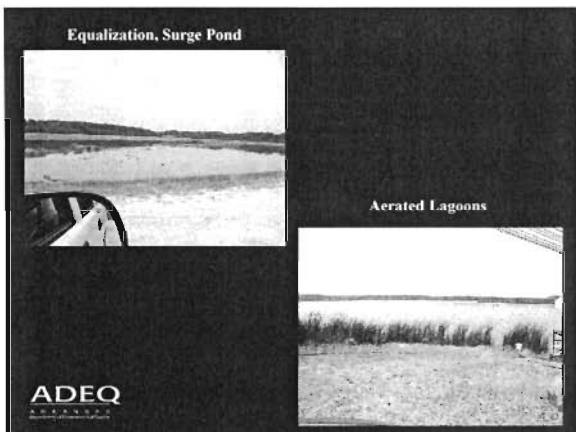
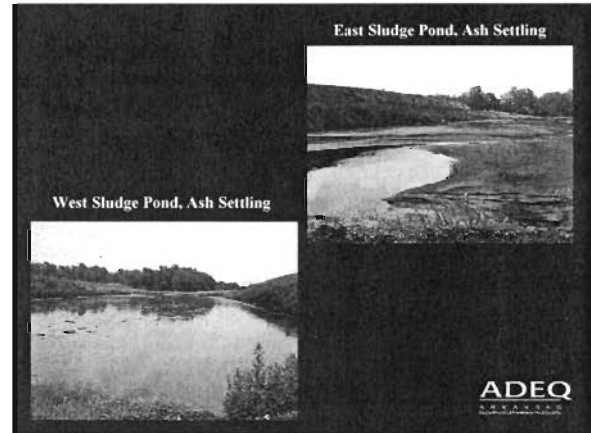
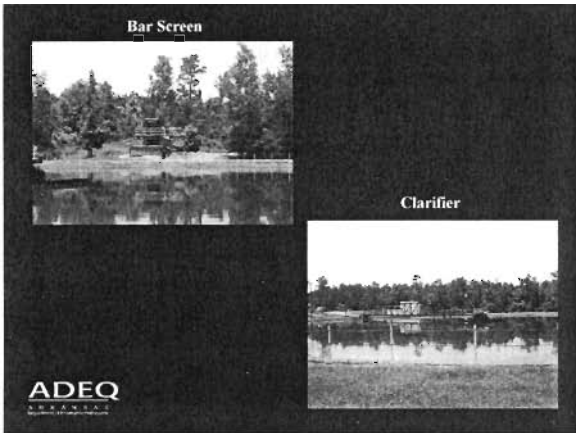
- Process Wastewaters from
  - Plywood Plant & Stud Mill
  - Pulp & Paper Mill
  - Chemical Plant
- GP Crossett Sanitary Wastewater
- Treated City of Crossett Sanitary Wastewater
- Landfill Leachate
- Site Stormwater
- Building Products
- Truck Wash Wastewaters
- Backwash Wastewaters



### Wastewater Treatment System

- screening
- primary clarifier
- settling for ash removal
- equalization
- aerated lagoon with solids settling
- sludge dewatering





## Effluent Flow Path

- Outfall 001: Mossy Lake, then into Coffee Creek, then into Ouachita River in Segment 2D of the Ouachita River Basin.
- SMS 002: At the transition from Mossy Lake to Coffee Creek then into Ouachita River in Segment 2D of the Ouachita River Basin.

ADEQ  
ARIZONA  
Department of Environmental Quality

## ADEQ Jurisdiction

- The Water Division of ADEQ does not have the authority to consider the following in this NPDES permitting decision:
  - Sludge disposal (facility landfill permitted under 292-S3N)
  - Odor
  - Taste of fish caught in the Ouachita River

ADEQ  
ARIZONA  
Department of Environmental Quality

## Permit Limits

Permit limits were developed using the following sources.

- Technology-based effluent limits pursuant to 40 CFR 430, Subpart B;
- Arkansas water quality standards (Reg. 2); or
- Louisiana water quality standards (L.A.C. 33:IX).

**The most stringent limits have been placed in the permit.**



## Sampling

All parameters, with the exception of flow and pH, listed in the permit must be analyzed by a laboratory certified by the ADEQ.



## Changes to Permit

- AOX limits increasing due to increase in production of unbleached pulp. Increase is allowed under the anti-backsliding regulations because it is based upon new information. 40 CFR 122.44(l)(2)(i)(B)(1)
- Monitoring and reporting requirements for Total Phosphorous and Nitrates have been included.
- Facility is now required to have an operator who holds an Advanced Industrial wastewater operator license.
- For complete list of changes, please see Item #6 of the Fact Sheet.



## Environmental Protection for Waters in Louisiana

- Priority Pollutant Scan (PPS) reviewed in accordance with the procedures and standards of the Louisiana Department of Environmental Quality (LDEQ).
- Limits for Priority Pollutants at SMS2 based on the more stringent of the limits calculated based on ADEQ's and LDEQ's standards.
- BOD5 and TSS limits at SMS2 are water-quality based and determined to be in compliance with LDEQ's standards during the last permit renewal.



## Permit Reviewed By

- U.S. Fish and Wildlife Service
- Arkansas Department of Health
- U.S. Army Corps of Engineers
- Arkansas Department of Heritage
- Louisiana Department of Environmental Quality
- EPA Region VI
- Other Interested Parties



## Comments Received

- EPA issued a letter of no objection to the draft permit on December 16, 2009.
- No comments were received from any of the other agencies that reviewed the draft permit.
- Permittee submitted comments which were received on March 17, 2010.
- Comments received from other interested parties prior to the end of the public comment period.



## What You Can Do

- Participate in permit decision-making
- Submit comments on draft permit decisions
- Contact ADEQ about environmental concerns



ADEQ  
ARIZONA  
DEPARTMENT OF ENVIRONMENTAL QUALITY

## Information Requests

- If you would like more information on this permit please contact:

Loretta Reiber, P.E.  
ADEQ, Water Division  
5301 Northshore Drive  
North Little Rock, AR 72118  
Telephone: (501) 682-0612  
Email: [reiber@adeq.state.ar.us](mailto:reiber@adeq.state.ar.us)



ADEQ  
ARIZONA  
DEPARTMENT OF ENVIRONMENTAL QUALITY

## Any Questions?



ADEQ  
ARIZONA  
DEPARTMENT OF ENVIRONMENTAL QUALITY

## Formal Comments

- Please state your name and mailing address.
- Clearly voice your concerns.
- Time limits may be set depending on how many wish to speak.
- All comments, written and oral, must be submitted by the end of this public hearing.
- Please refrain from talking while comments are being recorded during the public hearing. This will help to ensure that the oral comments can be clearly heard on the recording.

ADEQ  
ARIZONA  
DEPARTMENT OF ENVIRONMENTAL QUALITY